



Open connectivity SCADA software platform

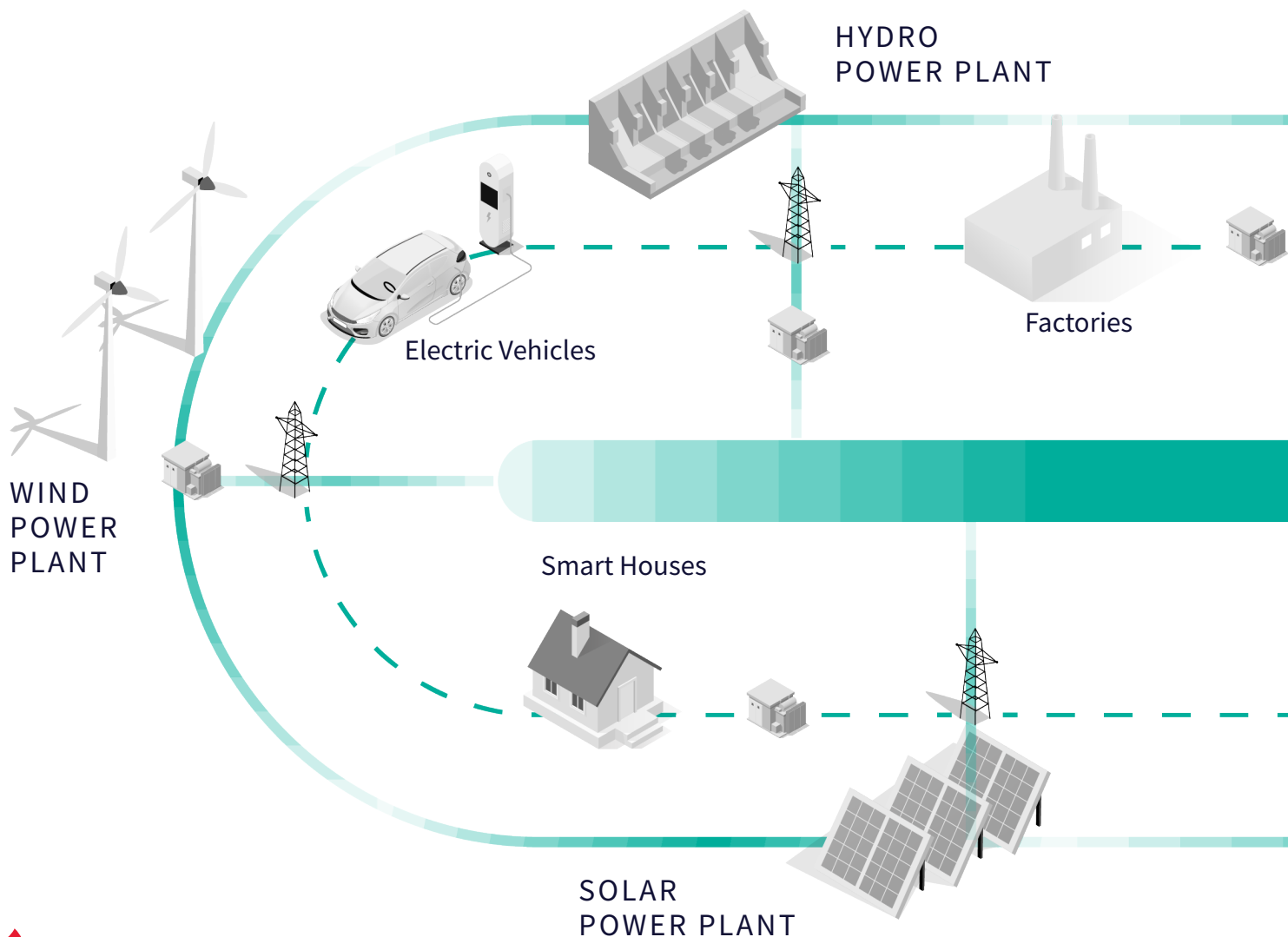
SOLUTIONS FOR POWER



Power Generation - Transmission - Distribution

FEATURES

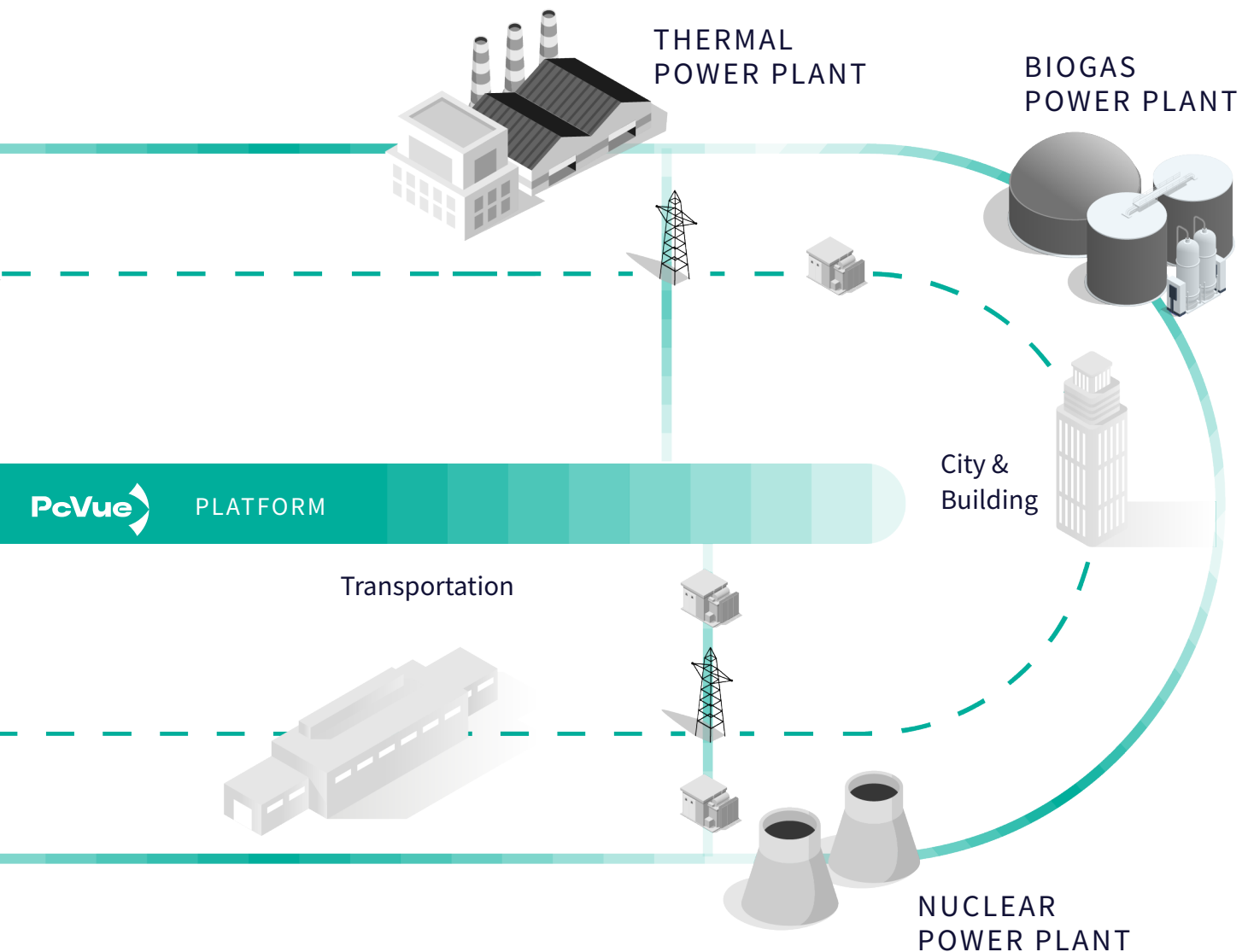
- A single platform to develop your application
- Built-in support for IEC 61850 MMS Client DNV KEMA certified, IEC 60870-5-104 Outstation, IEC 60870-5-101/104 Client, ICCP/TASE.2 (Inter Control Center Protocol), IEC 61400-25, DNP3, OPC UA/ OPC DA, Modbus TCP/IP
- Deployment solutions from stand-alone station to high availability distributed systems
- Ready-to-use animated symbols for power systems
- Dynamic busbar coloring
- On-line/Off-line simulation
- Events and alarms management
- KPI and generic dashboard reporting tools



BENEFITS

- Monitor and control any kind of power systems
- Connect heterogeneous and distributed assets
- Centralize data for post-mortem analysis, dispatching and reporting
- Save time and cost with a flexible and scalable open platform that adapts to system changes
- Take advantage of the latest mobile technologies

With a rich HMI, drivers including IECs, DNP3, a versatile architecture and full reporting capabilities, PcVue offers a complete platform to meet the power system automation requirements.



The flexibility and scalability of the **PcVue platform** drive unparalleled efficiency, seamlessly monitoring and controlling millions of data points across any power system.

POWERING RELIABILITY AND AVAILABILITY FROM GENERATION TO DISTRIBUTION

To meet the demands for performance, robustness, and security faced by power system operators, PcVue offers a powerful platform that puts you in control of all types of distributed and heterogeneous assets. With a state-of-the-art interface, extensive built-in drivers like IECs and DNP3, and flexible architecture options, PcVue ensures reliable, uninterrupted power - from generation to distribution. PcVue also offers full real-time monitoring, data processing, and reporting features, making it an all-in-one solution for power management. Step into the future of power management with a solution designed to keep your systems running smoothly and securely.





A SINGLE CONFIGURATION PLATFORM THAT REDUCES DEVELOPMENT COSTS

- ✔ Advanced configuration environment
 - Intuitive and unique interface using wizards
 - Configuration and diagnosis tool
 - Object-based approach, modelization tools,
 - Suite of import tools for mass configuration from third-party platforms
- ✔ Open platform for integrating future components
- ✔ Multi-language HMI platform designed to handle several languages in projects both in design and run-time
- ✔ Full backward compatibility

SMART GRID INTEROPERABILITY

Your system connected seamlessly
to heterogeneous environments

IEC 60870-5-101/104*

- ✔ Direct execute (DE) and Select before operate (SBO)
- ✔ Double points
- ✔ Quality descriptors and time tagged values



*IEC 60870-5-101/104 Client
*IEC 60870-5-104 Outstation

IEC 61850 MMS CLIENT

- ✔ 8-1 client driver
- ✔ Direct execute (DE, DEw) and Select before operate (SBo, SBoW)
- ✔ Pre-defined and extensible data class catalog
- ✔ Buffered and unbuffered report control blocks (BRCB, URCB)
- ✔ DNV KEMA Certified



IEC 61400-25

- ✔ Communications for monitoring and control of wind power plants



ICCP/TASE.2

- ✔ Inter Control Center Protocol
- ✔ Support for secure ICCP



DNP3

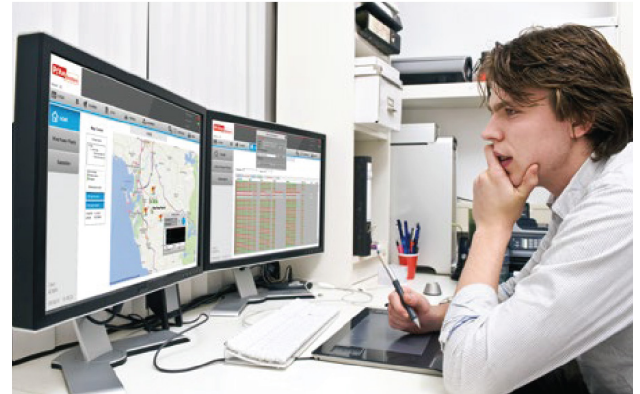
- ✔ Level 2+ implementation
- ✔ Support for both polling and spontaneous messages
- ✔ Comprehensive handling of objects groups & variations
- ✔ Control relay and analog output block (CRoB, AOB)



MONITOR AND CONTROL YOUR SYSTEM EFFICIENTLY WHILE REDUCING THE USERS TRAINING

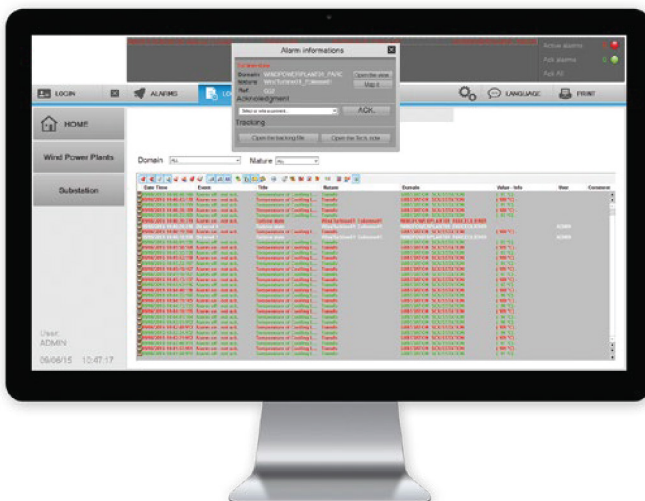
The support of innovative run-time features such as dynamic busbar coloring or a GEO Map control for GIS decision making, enhanced the operator experience and efficiency.

The user friendly environment, the set of built-in animations and viewers, objects libraries but also the generic approach of the design, facilitate the development using an on-line configuration.



HUMAN MACHINE INTERFACE

- ✓ Ready-to-use graphic animations and pre- defined libraries
- ✓ Capability to mix simulated and real time data on the same mimic
- ✓ Contextual navigation
- ✓ GEO map control for GIS
- ✓ Dynamic busbar coloring
- ✓ Zoom and layers system
- ✓ Mimic navigator : help user to navigate through a very large busbar



ALARM & EVENT LOGGING

- ✓ Full featured viewers
- ✓ Sequence Of Events for fault analysis
- ✓ User & System activity logging
- ✓ Alarm filtering and masking
- ✓ Suppression by dependency
- ✓ User acknowledgement
- ✓ Contextual pop-up mimics
- ✓ Notification by email and text message

EXTRACT VALUE FROM DATA: POST MORTEM ANALYSIS AND REPORTING

PcVue offers all the necessary tools for data extraction, stats and reporting to cover the need for information.

PcVue records data to a SQLServer database with its built-in Historical Data Server which make the data available for short term or long term analysis and reporting.

Statistical data can be exported to Excel using the built-in Data Export of PcVue. For advanced reporting PcVue can connect to DreamReport software.

In addition, for maximum flexibility and high-level of customization the reporting platform SQLServer Reporting Services can be used with PcVue.



AN INNOVATIVE MOBILE APP FOR SMARTER SUPERVISION

Deployment solutions that adapt to system changes while ensuring a constant availability and a high security level

PcVue is designed to support multi-station architectures, offering a high scalability of the system and flexible deployments solutions. Inter-messaging and redundancy mechanisms for critical applications are built-in and easy to configure using a networking wizard. PcVue is also mobile ready allowing a quick access to the data anytime, anywhere and from any devices.

Taking advantage of the cutting edge mobile technologies, the latest mobile app for PcVue introduces an innovative indoor positioning system to deliver the right information to the right person at its current location.



From stand alone station to client/server and distributed architectures for wide geographical deployment of the system

Full support for virtualized environments such as vmware® or Hyper-V™

Full integration of the latest Windows OS security features

Solutions for remote access and thin clients

Web solution to monitor and control the system using a standard web browser

Remote access solution to monitor and control the system from any operator station or HTML5-compliant web browser

Mobility solutions

A mobile app for asset based and proximity based services
Monitor and control the data, GPS tracking, Indoor positioning system



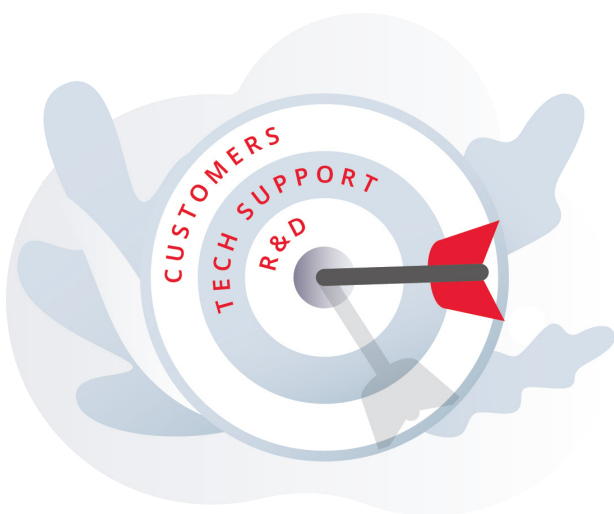
OPEN CONNECTIVITY SCADA SOFTWARE PLATFORM

In business for over 40 years, ARC Informatique is a forward-thinking industrial software editor with 16 offices worldwide. Using the latest technologies,

ARC Informatique develops PcVue, a reliable, secure, and robust SCADA platform, dedicated to monitoring and control applications.

To answer the needs of performance, robustness and security for power system operators, PcVue delivers an efficient platform to monitor and control any kind of heterogeneous and distributed assets. With a cutting-edge UI, extended built-in drivers for power including IECs and DNP3, versatile architectures and full real time monitoring, data processing and reporting capabilities, PcVue ensures the reliability and availability of power from generation to distribution.

With 160+ dynamic team members, we are both physically very close and culturally compatible with our user base, thereby facilitating responsive customer care. Our ISO 9001, 14001 and 27001 certifications ensure quality, sustainability, and security in our development processes from design to delivery.



A CUSTOMER-ORIENTED APPROACH

Listen to and answer our customers develop and adapt our solutions via R&D responsive technical support.

GLOBAL PLAYER
LOCAL APPROACH



CONTINUOUS QUALITY
IMPROVEMENT



ARC Informatique is ISO 9001,
ISO 14001 and 27001 certified





Solutions for
Power

ARC Informatique

✉ arcnews@arcinfo.com

🌐 www.pcvue.com



ARC Informatique is ISO 9001,
ISO 14001 and 27001 certified