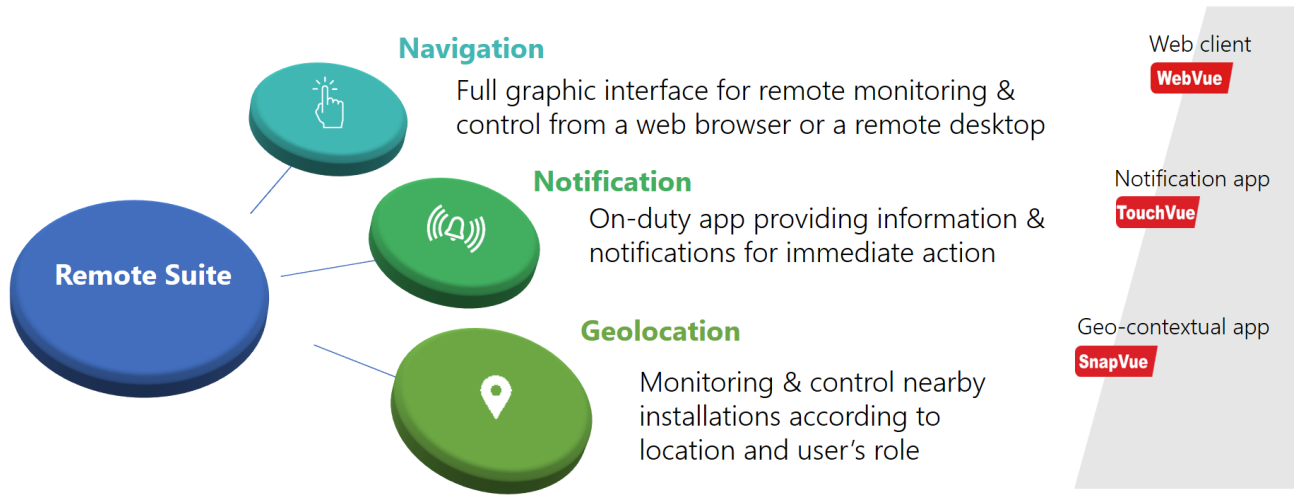


PcVue solutions

Remote solutions DEMOS



WebVue

- Scan the QRCode



English

https://demo.pcvuesolutions.com/Demo_Webvue_EN



Français

https://demo.pcvuesolutions.com/Demo_Webvue_FR



Demo SnapVue



SnapVue is a location based mobile app which uses geo-tags such as BLE (Beacon Low Energy), NFC, QRcode to localize the smart device and display relevant information and control to the mobile user.

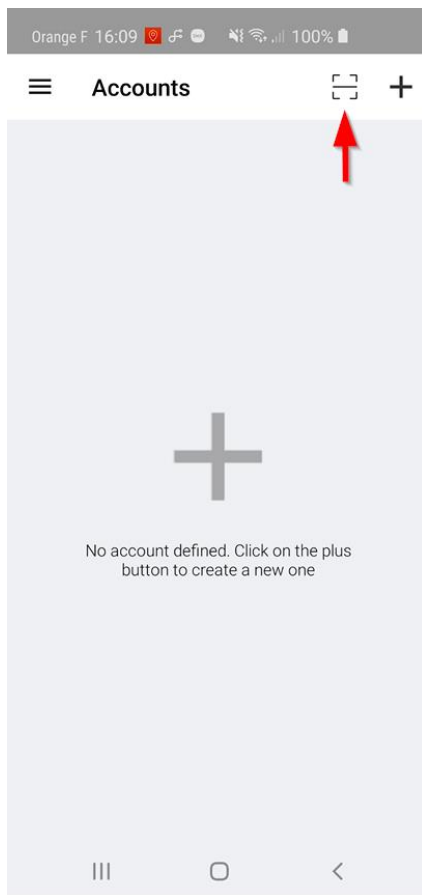


- ✓ A demo server allows to connect and test SnapVue.
- ✓ You'll find QRcodes to scan and check the result in the app.
- ✓ It's also possible to use NFC or BLE if you have one using the ID mentioned below each QRcode



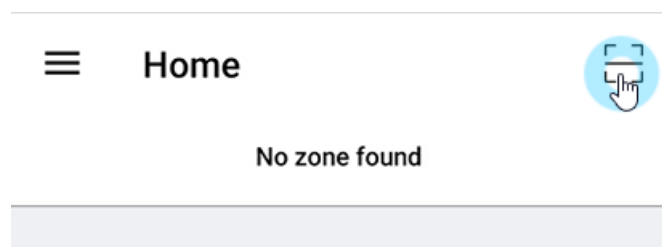
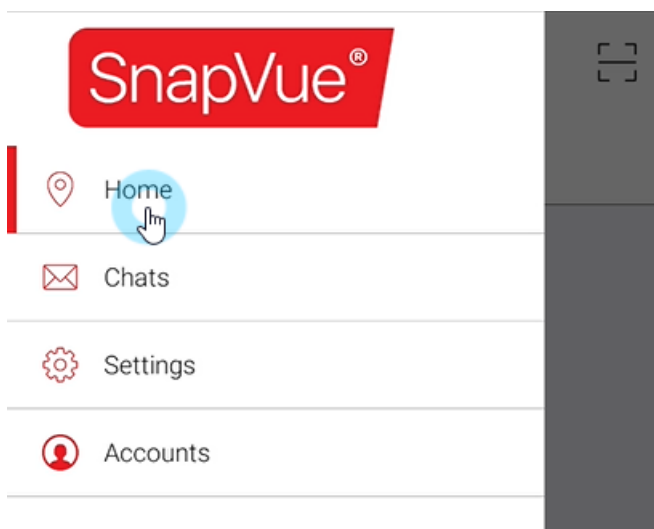
1- Open SnapVue

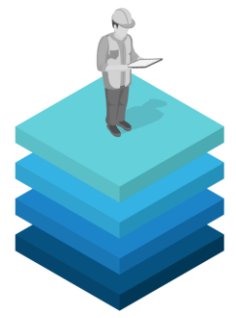
Scan the QRcode to connect to demo server



2- Test!

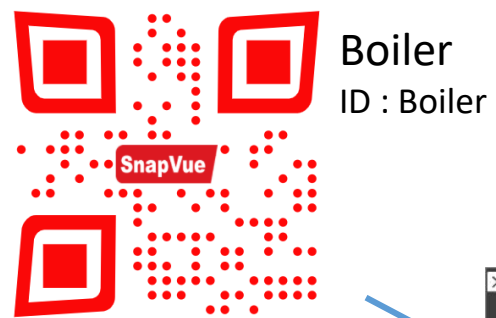
Open menu "HOME" and scan QRcodes





Smart Building

Ground floor



Technical room
ID : fda50693-a4e2-4fb1-afcf-c6eb07647825-7-1

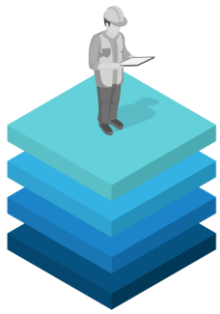
Floor 01



TechRoom
ID : fda50693-a4e2-4fb1-afcf-c6eb07647825-2-1



Air Handler Unit
ID : AHU

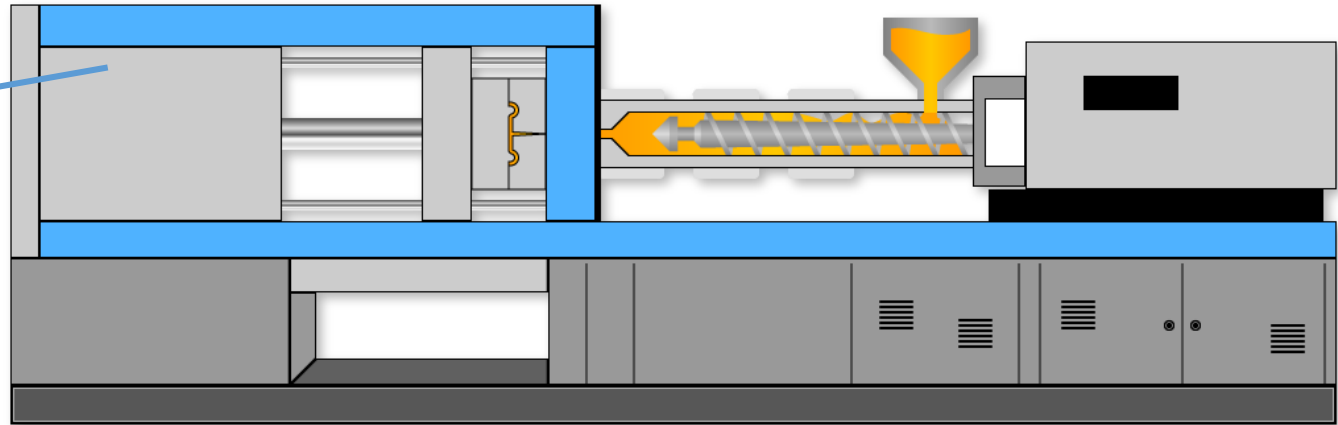


Industry

Machine 01



ID: M01



Production / SETUP PRODUCTION NEW BATCH 286 Version: 3.7

ADMIN Machine 01

Workshop overview
Production
 Monitoring
 Parameters
 Reporting
 Recipes

Manufacturer: Engel	Status: Ejection	Since: 00:00:08
---------------------	--	-----------------

BATCH N°: 100022968	Product: SEGAL-RIT006	Resin Type: TPE	Insert A: Nickel	Insert B: Glass	Base: 8.5	Mold Id: 111
Type: FINAL PROD	# Pieces: 56	# Cycles: 7	Estimated time: 00:03:44			

Production Last cycle: 03/26/18 11:37:45

TRS 98 % Cycles done 1 / 7	Pieces Produced 14% 8/56 Avg. cycle time 05:28	Cushion 18.00 mm Back pressure 2 % Plast. time 418.00 s	Filling time 37.00 s Mould rear temp. 232 °F Mould front temp. 316 °F
---	--	--	--

Closing

Plastification

Injection

Cooling

Ejection

Since 00:00:08

11:37:46
26/03/18



Info line



ID: fda50693-a4e2-4fb1-afcf-c6eb07647825-1-2

Site 01 | Line 01

WebVue_EN

Workshop overview

Production

Monitoring

Parameters

Select line

Machine #	Batch #	Product type	Insert A	Insert B	Resin	Base	Mold	TRS (%)	Avg. Cycle time
IMM33	100026043	SYS-R2	ABS	Glass	Metal	6.5	108	95	160 s
IMM34	100027941	SEGAL-RIT006	TPE	Nickel	Glass	8.5	104	91	206 s
IMM35	100031627	PANAMIR-Z23	PC	Glass	Nickel	7	106	93	121 s
IMM36	100007081	SEGAL-RIT006	TPE	Nickel	Glass	8.5	104	91	222 s
IMM37	100002741	SYS-R2	ABS	Glass	Metal	6.5	107	96	413 s

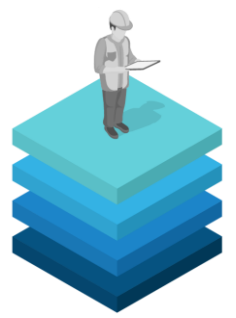
Line 01

Engel IMM33	Ejection	95%	160 s
Engel IMM34	Plastification	91%	206 s
Milacron IMM35	Injection	93%	121 s
Engel IMM36	Cooling	91%	222 s
Hysion IMM37	Ejection	96%	413 s

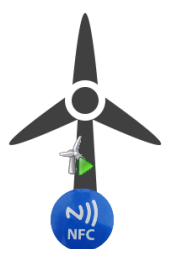
18/12/20	11:26:27:039	IMM33	SET INJ	V15SET HIGH	Alarm on - no.
18/12/20	11:27:56:496	IMM34	SET INJ	V15SET LOW	Alarm on - no.
18/12/20	11:32:45:567	IMM37	SET INJ	V15SET HIGH	Alarm on - no.
18/12/20	11:27:45:567	IMM37	SET INJ	V15SET HIGH	Alarm on - no.

10:29:38

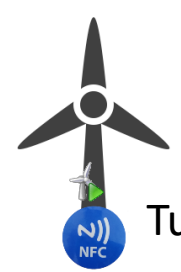
18/12/20



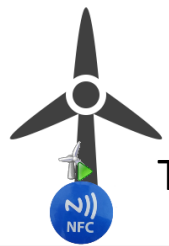
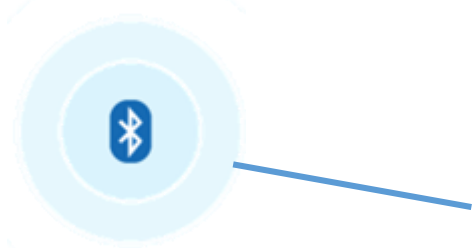
Energy



Turbine 1
ID: Turbine



Turbine 3



Turbine 2



Farm 01
ID: fda50693-a4e2-4fb1-afcf-c6eb07647825-3-1



WindPowerPlant 01 | WindTurbine 03

Site01.WindTurbine03

REFERENCE: G47
Manufacturer: GAMESA

ON

Last update: 29/08/18 16:56:52

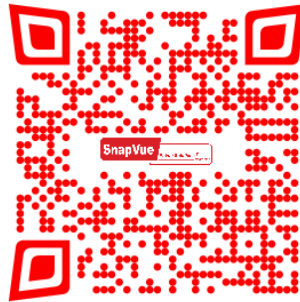
Apparent Power	7 VA	RPM	0.8 rpm
Active Power	546 kW	Reactive Power	1 kVAR

PITCH		YAW	MOTOR		NACELLE	
Brake	ON	Angle Blade	Rotor Speed	Wind Speed	Wind Direction	Temperature
Motor	OFF	1. 38.55° 2. 36.63° 3. 52.68°	15.6 rpm Max. RPM: 9.8 rpm Min. RPM: 16.98 rpm Avg. RPM: 13.76 rpm	7.37 m/s	61.2°	24.79 °C
					Humidity	Atm Press
					40.61 %	1026.74 hPa

16:56:54
29/08/18

07 Alarms ON
00 Alarms ACK

Transformer



ID: Transformer



Transformer	
Temperature	83.5 °C
Position changing	LOW
Liquid cooling	
Pressure	15 bar
Liquid temperature	97 °C
Pump	OR

Active power	?
Reactive power	53 kw
cos phi	?
Frequency Hz	50.20
Primary current	30 A
Primary voltage	19350 V
Sec current	95 A
Sec voltage	

10:22:25
18/12/20

176 Alarms ON
176 Alarms ACK

Sub station



ID: fda50693-a4e2-4fb1-afcf-c6eb07647825-4-1

A screenshot of the PcVue software interface for a substation. The interface is dark-themed and shows the following information:

- Header:** PcVue Solutions, Substation / Cubicle01, and various utility icons.
- Navigation:** ADMIN, ADMIN, WindTurbine, Substation (selected), Transformer, Single line diagram, Mobile users.
- Device Info:**
 - Version: XPI-15
 - Rated Voltage: 12kV
 - Rated Frequency: 50Hz
 - Rated Current: 200A
 - Main Busbar Rated Current: 150A
 - Rated Short-Circuit Current: 31kA
 - Rated Short-Close Current: 80kA
 - Serial #: G-45938-4/CG2
 - Manufacturing Date: 2018-02
 - Applicable Standard: KP4597
 - Protection grade: IP4X
- Real Time:**
 - Running status: **DOWN**
 - Running hours: 00:00:00
 - Defaults: 2
 - Elec. wear level: 96 %
 - Switch aging level: 65 %
 - Switching count: 0
- Image:** A photograph of the physical cubicle unit.
- Footer:** 16:58:37, 29/08/18.

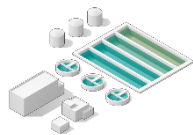
Cubicle



ID: QRCode_DB

A screenshot of the PcVue software interface for a substation. The interface is dark-themed and shows the following information:

- Header:** PcVue Solutions, Substation 01 /, and various utility icons.
- Navigation:** ADMIN, ADMIN, WindTurbine, Substation (selected), Transformer, Single line diagram, Mobile users.
- Operations:**
 - Total power: 214 MW (indicated by a blue gauge)
 - Load rate: 86 % (indicated by a green progress bar)
 - Defaults: Click to simulate
 - Linear smoke: Leak
 - Intrusion: Switch fault
 - Gate status: Camera alarm
- Environment:**
 - Temperature: 21 °C
 - Humidity: 59 %
 - Water level: 3 m
- Image:** A 3D perspective view of the substation interior with a QR code on a cubicle.
- Footer:** 16:57:19, 29/08/18.
- Alarms:** 06 Alarms ON, 00 Alarms ACK.



Water treatment

Pumping station

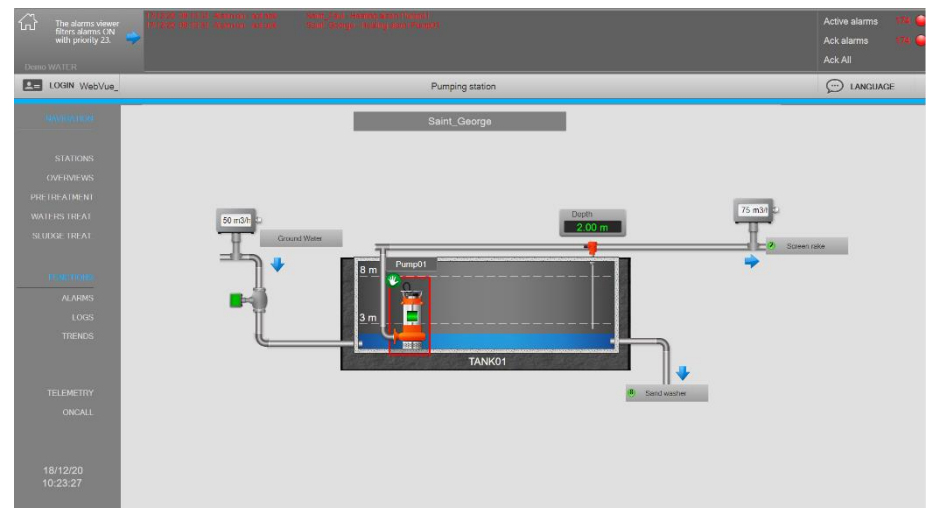


ID: Water station

Water pump



ID: Water_pump



Demo TouchVue

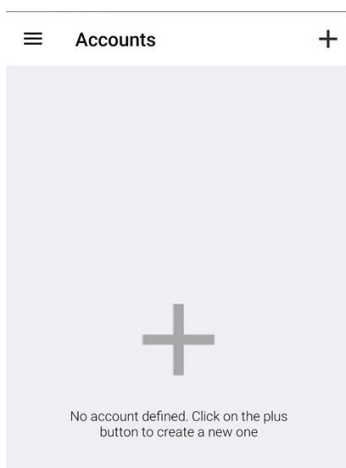


TouchVue is an app notifying mobile users of any event on the process and providing an interface to react in a timely fashion. It relies on the latest technologies offering a cost-effective solution combining ergonomics, security and ease of implementation.



✓ A server for demonstration is available

1- Open TouchVue



2- Add a server

← Server configuration DONE

SETTINGS

Alias Demo

Host address demo.pcvuesolutions.com

Port 443

SECURITY

Ignore certificate errors

3- Connect

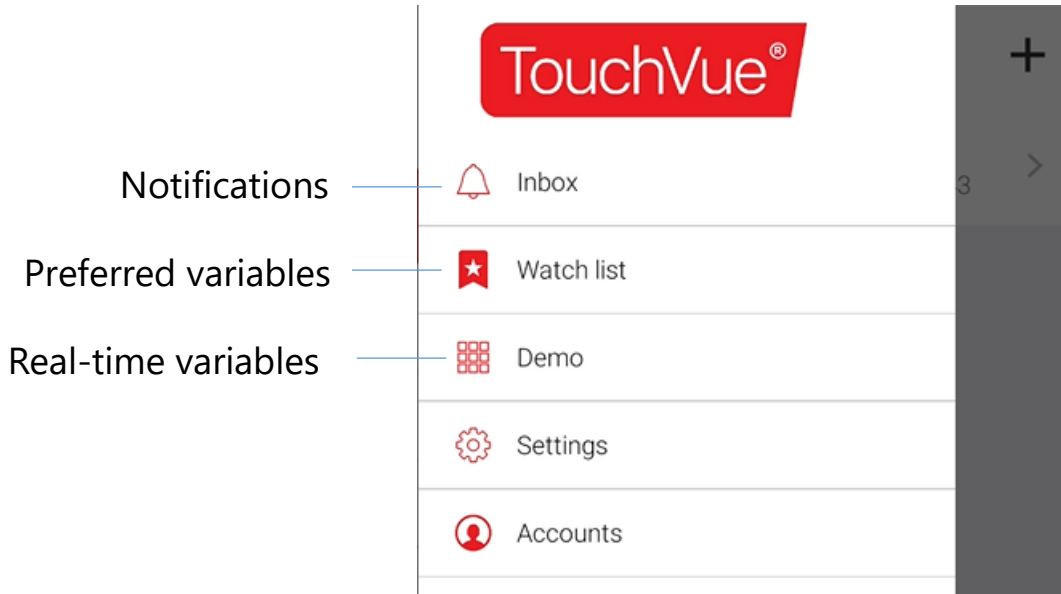
← Demo EDIT

TouchVue

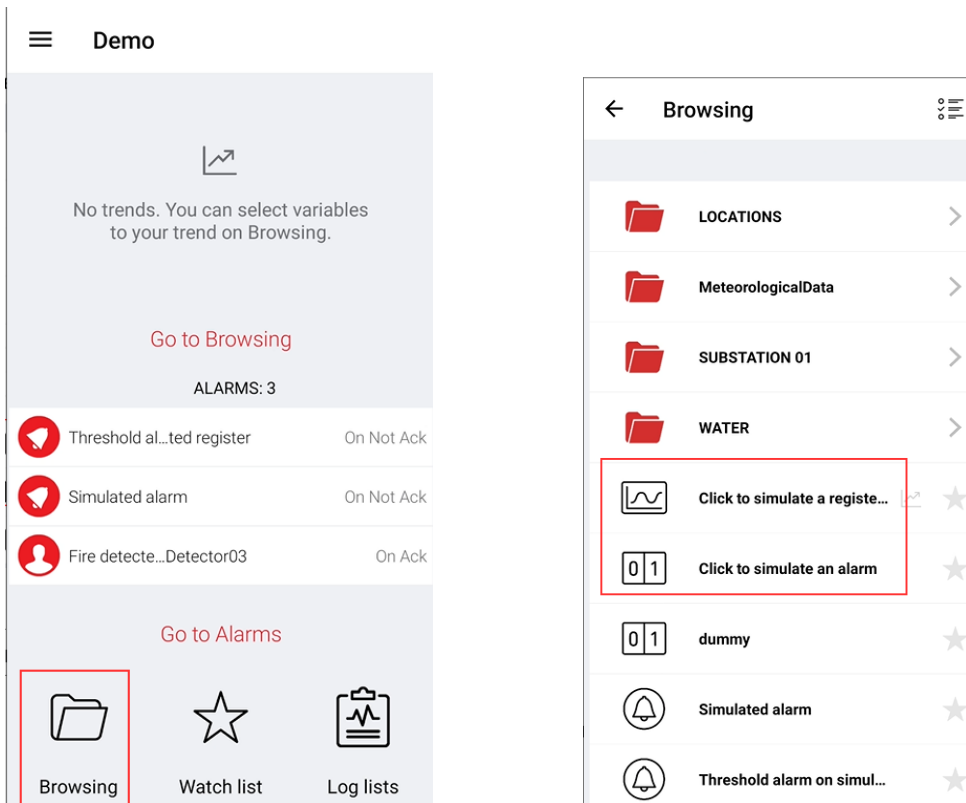
Log in

User/Pwd
Maint_en/Maint_en

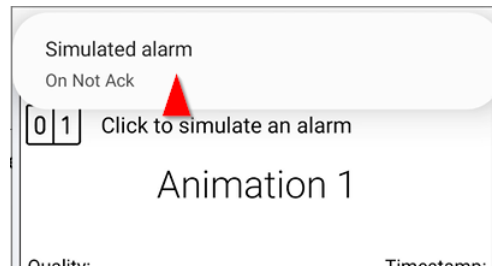
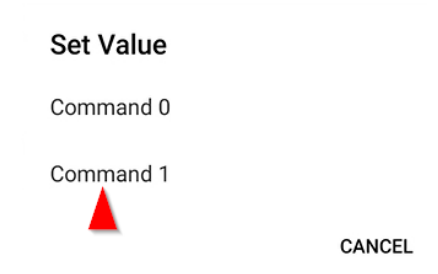
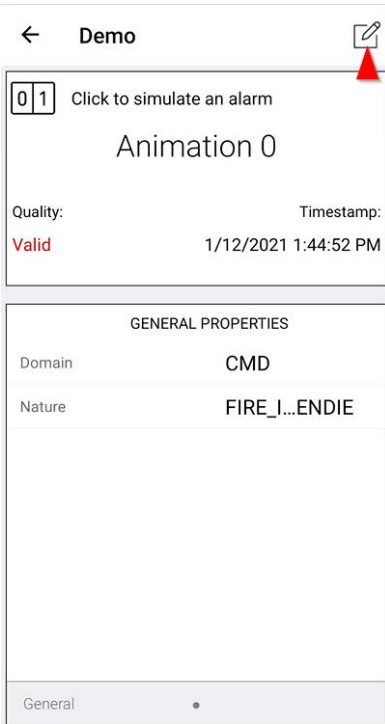
4- Test



Tap on Demo



Tap on the simulation variables



Enter a value >25 to trigger a threshold

