



WEBVUE

HTML5 web client

WEBVUE

HTML5 web client

WebVue is built-in HTML5 web client providing a graphic interface to monitor and control your process from any device. It relies on the latest technologies offering a cost-effective solution combining ergonomics, security and ease of implementation.


AT A GLANCE


- ✔ Monitor & control your PcVue process from a web browser with any devices
- ✔ Mimics, alarm lists & acknowledgment, event logs, real time and historical trends
- ✔ Webservices toolkit available to create your own custom web interface




USER ORIENTED

For end user, IT specialist or system integrator, WebVue is designed to fit any user need from regular to very advanced.

- 

UX for better efficiency: seamless and smooth Interfaces
 Ability to monitor multiple mimics concurrently in multiple web browser tabs
 Cross platforms
- 

Easy to configure and to deploy with the EasyMobile Technology
 Multi user capacity
 Scalable & open to third party application or portals
 Transparent license model
- 

Secure architectures (DMZ, certificates) and communication (HTTPS)

SECURITY & OPENNESS

Security management

The PcVue Web Server station uses Microsoft IIS and OAuth technologies to manage security and authentication jointly with the enterprise firewall. Exchanges are based on RESTful/Json Webservices via HTTPS protocols for encrypted data exchange (SSL V2).

Openness to third party applications

PcVue provides a RESTful/Json webservices toolkit so you can embed PcVue objects (mimics, symbols), real time data, alarms (creation, subscription to lists etc.), event logs (process events, user actions, logins etc.) and historical trends (changes of values etc.) into your own application or web portal.

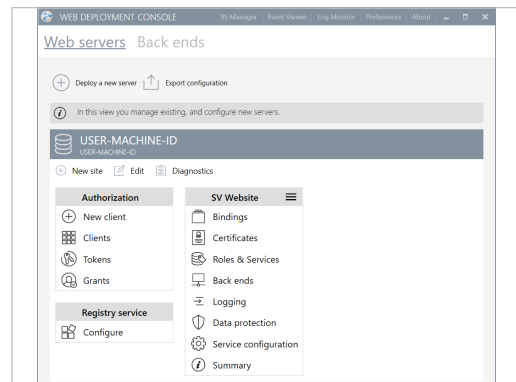


EASY MOBILE TECHNOLOGY

WebVue is based on the exclusive EasyMobileTechnology ensuring a fast, easy and secure configuration and deployment.



- ✔ No gateway, no extra plugin
- ✔ HTML5
- ✔ No client installation
- ✔ A deployment console for easy configuration – no scripts – Wizard only
- ✔ Open to third-party application
- ✔ For any user: End-user, SI, IT
- ✔ Secure scalable architecture and communication
- ✔ Easy diagnostic
- ✔ Affordable solutions

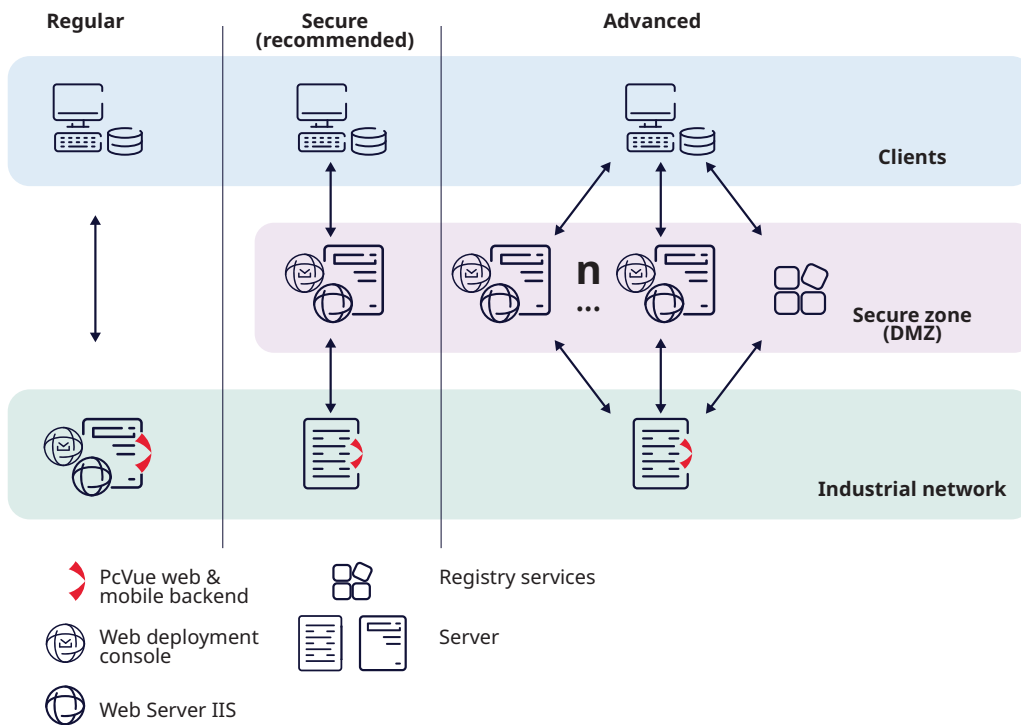


THE DEPLOYMENT MADE EASY

The EasyMobileTechnology allows deploying web architectures from regular to the most advanced and secured in few clicks!

Go web in 5 easy steps through wizards of the Web Deployment console

- Step 1:** Setup your mobility server
- Step 2:** Bind your PcVue server
- Step 3:** Secure the connection with a HTTPS certificate
- Step 4:** Deploy
- Step 5:** Run WebVue from your webbrowser



NOT SUPPORTED FEATURES

| Features | Comments |
|---|---|
| ANIMATIONS & CONTROLS | |
| Color – Legend animation | |
| Send – Recipe animation | |
| Send – Region animation | |
| Send – Languages animation | |
| Send – Timetable animation | |
| Run – Macro animation | |
| Security – Password animation | |
| VIEWERS | |
| Grid control | |
| Chart control | |
| Map control | |
| Pie/Doughnut/pyramid control | |
| Trends viewer, logs viewers, alarms viewer | With limitations. Check with your local technical support. |
| CONTROLS | |
| Messaging control | |
| Text-box form control | |
| Others form controls | Appearance may be different, in particular the intermediate state of a check-box list or option-button list control is not available. |
| Variable link with form control for mimics | Not available. Use SCADA Basic is required. |
| Third party ActiveX control | |
| Variable links | |
| Use of substitution strings for opening mimics : #I,#P,#U,#M.. | |


| MIMICS | |
|---|--|
| Multimedia file (AVI) | |
| Repeated mimic in the PcVue workspace | Only the first instance appears in the WebVue Client |
| Multi-screen and region management | |
| Control Zone animation accelerator keys | |
| OLE objects in mimics | |
| Run – Macro animation | |
| Security – Password animation | |
| VIEWERS | |
| 3D mimics | |
| Replay mode | |
| No Layer selection toolbar for the user for the visibility of graphic objects according to layers | |
| Zooming via SCADA Basic and decluttering features | |
| SCRIPTING | |
| VBA and Enable scripts | |
| SCADA Basic instructions and modes | Partially supported. See Help. |
| DATA PROCESSING | |
| Data Export | |
| CONFIGURATION | |
| Application Explorer Application Architect SCADA BASIC VBA Smart Generators | |




ARC Informatique

Headquarters and Paris office
2 avenue de la Cristallerie
92310 Sèvres, France

 +331 4114 3600

 Hotline: +331 4114 3625

 arcnews@arcinfo.com

 www.pcvue.com



ARC Informatique is ISO 9001,
ISO 14001 and 27001 certified